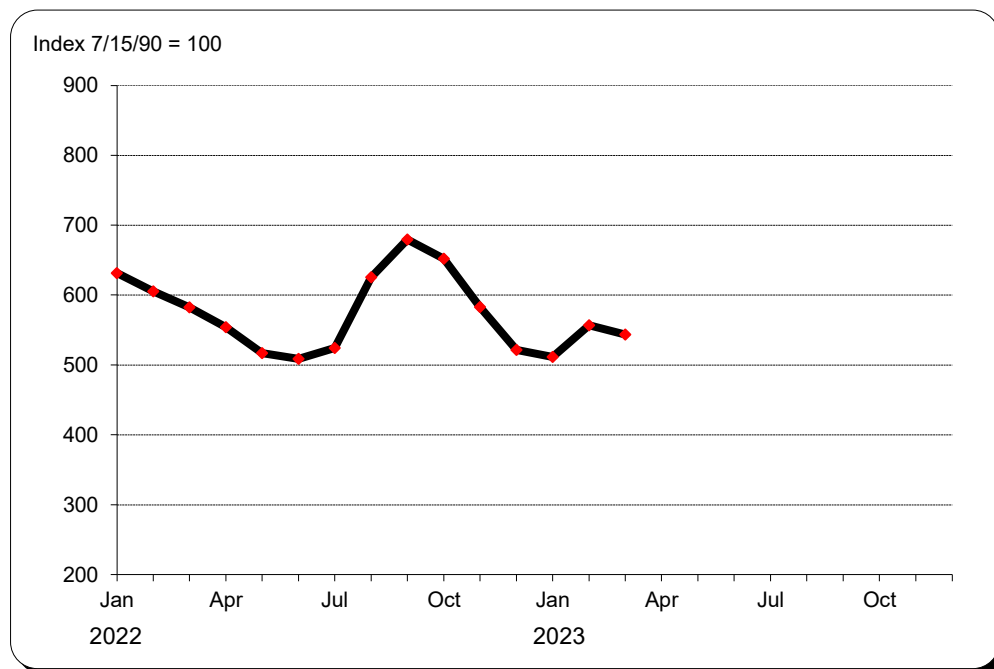




# Monthly Railroad Fuel Price Indexes

*Prices through March 2024*



Copyright 2024  
Association of American Railroads  
Policy and Economics Department  
425 Third Street, SW, Suite 1000  
Washington, DC 20024

April 19, 2024  
[www.aar.org](http://www.aar.org)  
[policy@aar.org](mailto:policy@aar.org)

## Monthly Railroad Fuel Price Indexes

### Data

- The price data, which include federal excise taxes, transportation, and handling expenses, represent the average monthly price paid for gallons purchased by freight railroads during each month.

### Collection

- Railroad diesel fuel prices, which are kept confidential, are collected by the Association of American Railroads (AAR) as sub-components of railroad costs reflected in both the AAR's *Railroad Cost Recovery Indexes* (RCR) and the Surface Transportation Board's *Rail Cost Adjustment Factor* (RCAF).
- Because fuel prices are an input to the RCAF, the collection and computation of the monthly figures are subject to strict procedures which are reviewed by the Surface Transportation Board and a third-party accounting firm.

### Availability

- Index information for any given month becomes available during the final 10 days of the subsequent month. From the AAR web site: (1) Click **DATA CENTER** (upper right); (2) click **Rail Cost Indexes** (left side); (3) scroll down to **Index of Monthly Railroad Fuel Prices (MRF)**; (4) click the **blue box** under the header.  
The AAR's web address is: <https://www.aar.org/>
- Monthly fuel index information is not available on other than an industry-wide basis.
- The quarterly publication *AAR Railroad Cost Indexes* contains an annual version of the RCR in its Table A, and a quarterly version in its Table C. Each table has a U.S., East, and West version that also lists the Fuel Index (1977=100.0) individually. That quarterly publication is available as a PDF with a calendar-year subscription.
- The STB's quarterly RCAF is submitted by the AAR to the STB on March 5, June 5, September 5, and December 5. The STB releases a decision on the submission 15 days later. The RCAF version of fuel is contained in the All-Inclusive Index, and is a forecast. The Fuel Index component is on a 1980=100.0 basis. The RCAF is adjusted two quarters later for differences between the forecast and actual. The quarterly fuel component is U.S. only. RCAF submissions, and the STB's decisions, are posted on the AAR and STB web sites. The publication *AAR Railroad Cost Indexes* maintains a history of the RCAF and All-Inclusive Index.

## Index of Average U.S. Railroad Fuel Prices

		Index	
		Jan 15, 1989 = 100.0	Jul 15, 1990 = 100.0
<b>2022</b>	January	505.6	507.7
	February	566.3	568.6
	March	700.5	703.4
	April	748.5	751.7
	May	812.3	815.7
	June	865.9	869.5
	July	781.7	785.0
	August	727.8	730.9
	September	713.8	716.8
	October	775.8	779.0
	November	740.2	743.3
	December	608.0	610.6
<b>2023</b>	January	628.6	631.2
	February	602.7	605.2
	March	579.7	582.2
	April	551.7	554.0
	May	514.6	516.8
	June	506.5	508.6
	July	522.1	524.3
	August	622.7	625.3
	September	676.7	679.5
	October	649.1	651.9
	November	580.4	582.8
	December	519.2	521.4
<b>2024</b>	January	509.3	511.4
	February	554.3	556.6
	March	541.3	543.5
	April		
	May		
	June		
	July		
	August		
	September		
	October		
	November		
	December		